

Appendix 3 Recipe Editor

Recipe Editor is kind of data editing tool, the user can through it to add, view, and modify rcp \ emi data format files, even import or export to .csv file.

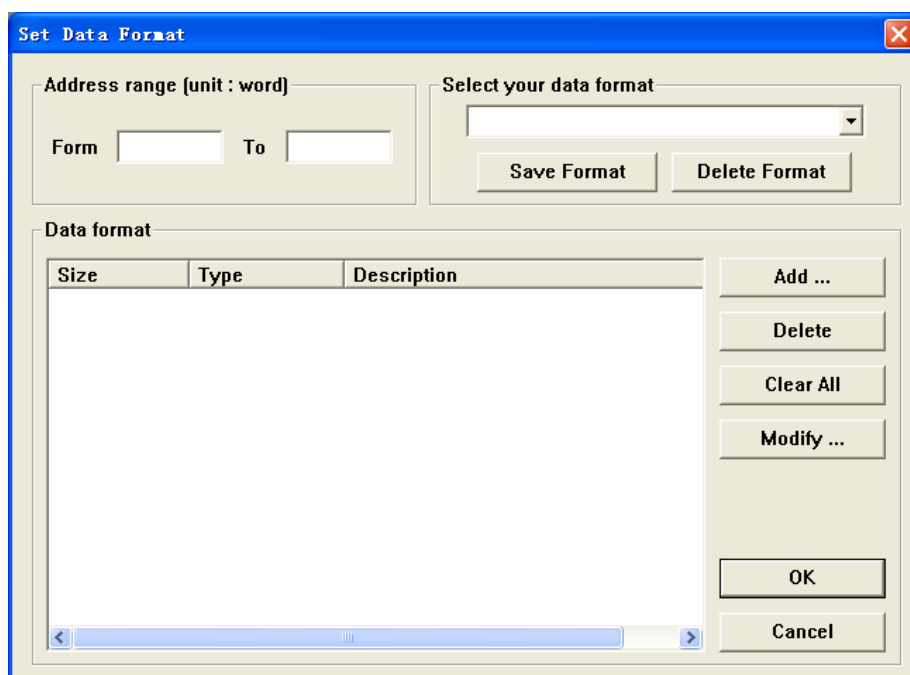
1. Introduction

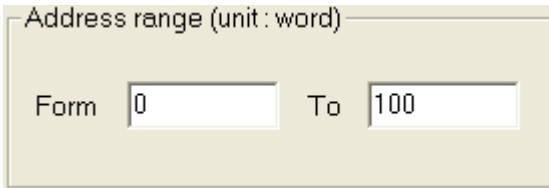
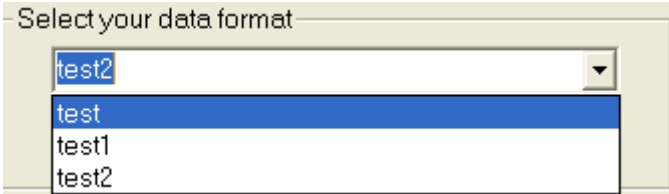
The data format type as follow :

16-bit BCD	32-bit BCD
16-bit HEX	32-bit HEX
16-bit Unsigned	16-bit Signed
32-bit Unsigned	32-bit Signed
Float	String

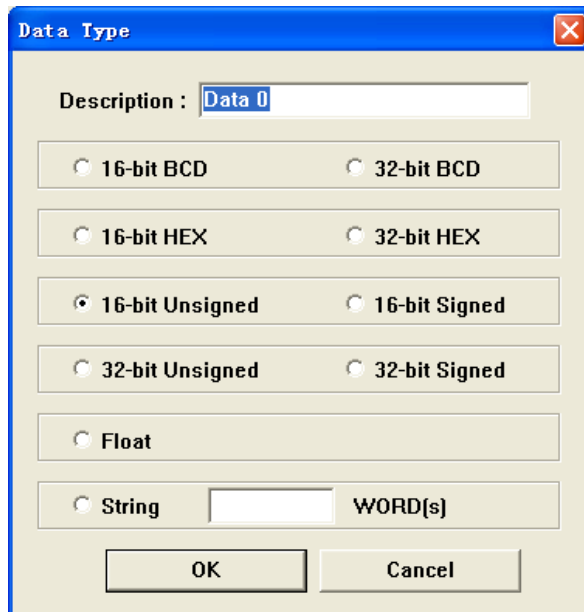
The rcp and emi both are belong to binary data format file. The csv belong to word file and can open by EXCEL directly.

To click File->New or File->Open, and will appear [Set Data Format] dialog, as follow :



[Address range]	<p>To fill in address range. (unit is WORD)</p> 
[Select your data format]	<p>Select data format which be saved, and contents of data format will show at [Data format] area.</p> 
[Add...]	Editing new data format
[Delete]	To delete type of data format area which be selected
[Clear All]	To click [Clear All] will clear [Data format] area all data format type
[Modify...]	Modify any item of [Data Format] area which be selected
[Save Format]	To store contents of data format into data.fmt (save on C:\EB8000 folder)
[Delete Format]	To delete contents of data format

Click [Add...] and will appear [Data Type] dialog, as follow :

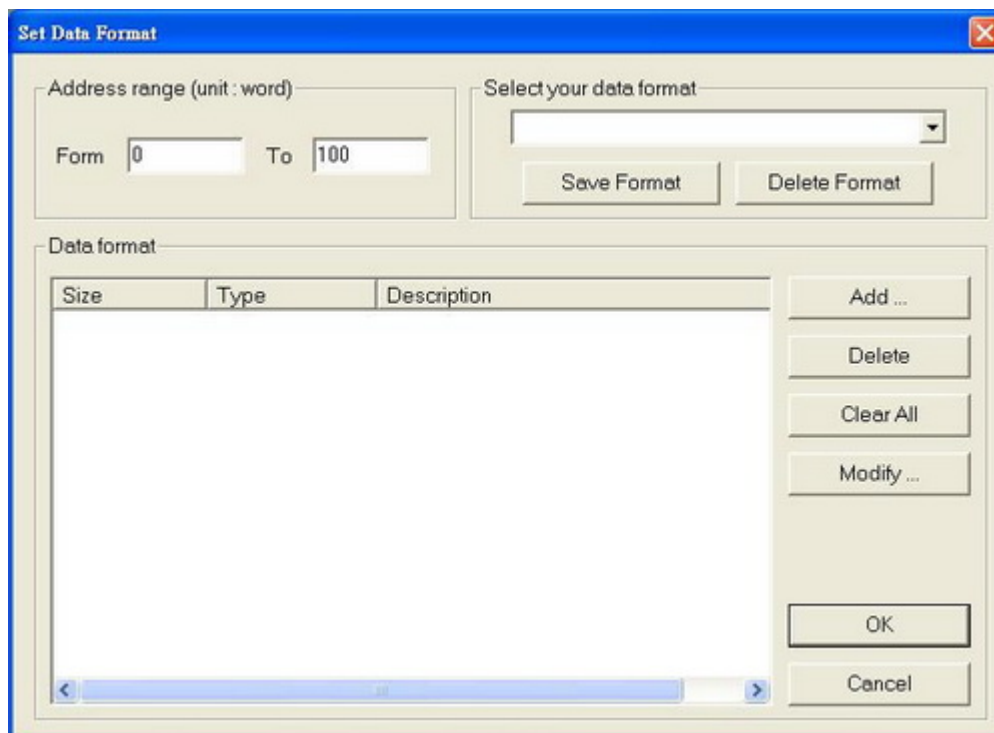


The user can select data type, and in [Description] define data name. If select [String] type, it must to fill in length of String, unit is WORD (2 BYTE).

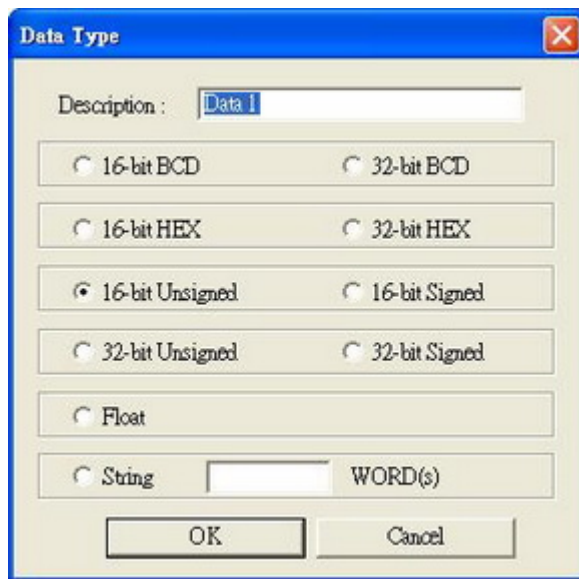
2. Setting of Recipe Editor

How to Add rcv 、emi File

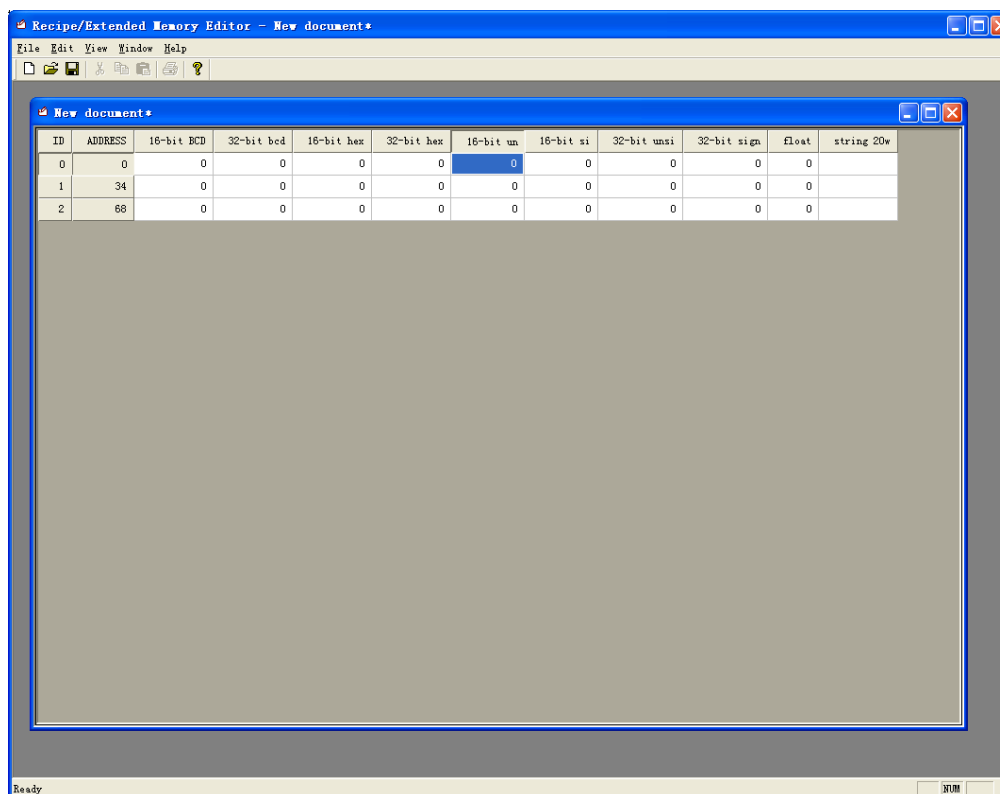
(1) To click File->New, the dialog as follow



(2) To click [Add...] to setting data format type, as follow



(3) After all of settings completed, a new document appear as follow



The user can input valid data in column, but if the data is too long, it will be cut off, and the invalid data will failure.

Click File->Save or File->Save As to save the file format you need. (rcp, emi, and csv.

If save the filename with .csv which can be open by EXCEL)

How to Modify rcp \ emi File

To click File->Open, and select file want to modify or view.

Export to CSV File

After open the .rcp or .emi file, click File->Save AS, and to save filename with .csv, then it can be view or modify by EXCEL.

Import CSV File

To click File->Open or File->Import CSV File to open exist file to modify or view. After editing .csv file in Recipe Editor, user can save the filename with .rcp or .emi and then it can be download to HMI.